



Continuous Louvre Systems

The ALU+ Continuous Louvre System range offers architects the means of enclosing space with a greater flexibility in both appearance and performance.

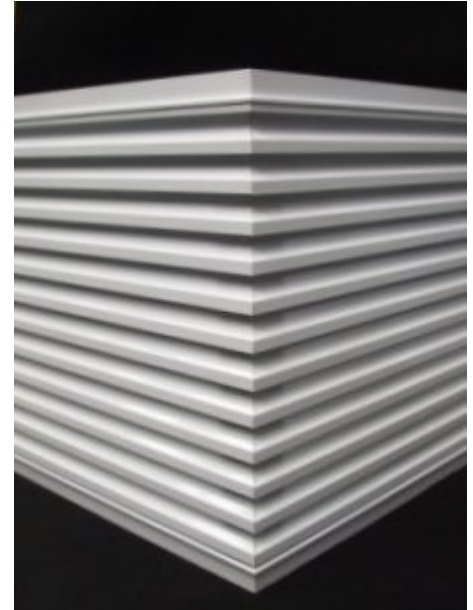
Made from extruded aluminium for greater strength and accuracy, our unique offering of ingenious aluminium clips, fixing and support systems gives flexibility and seamless integration into all types of buildings. A full suite of optional accessories is offered, including bird guards, insect mesh, single and double louvre doors, perimeter flashings etc.

A range of concealed supporting mullions ensures that materials are used economically while meeting client-specific requirements.

ALU+ has developed a range of Continuous Louvre systems that can be uniquely configured to provide the solution you require.

The unique all aluminium click-in systems allows for very quick assembly and installation on site.

The louvre blades are available in 34mm, 50mm and 75mm pitches.



Frameless Corners are also possible

Product Range

CLS34	Features a 34mm Louvre Blade
CLS50	Features a 50mm Louvre Blade
CLS75	Features a 75mm Louvre Blade



ISO9001
FM 547243



No visible joints between Louvre Panels is one of the main features of Continuous Louvre Systems



Continuous Louvre System CLS-34

Type

Continuous Louvre System with 34mm blade

The CLS-system can be fitted to an existing construction and is supported on vertical mullions.

Technical details

- Aluminium blade profiles are clipped into aluminium blade support clips.
- Blade pitch: 34mm.
- Blade height: 39mm.
- Visual free area : 68%.
- Available with different mullions.

Finishing

Natural anodised: 15 to 22 micron.

Other shades possible.

Powder coated in any RAL finish: 60 – 80 micron.

Manufacture

- Ready made or bar length
- Different types of mullions with 14,5mm, 50mm or 80mm depth.

Fixing

- Depending of the construction and project details





Continuous Louvre System CLS-50

Type

Continuous Louvre System with 50mm blade

The CLS-system can be fitted to an existing construction and is supported on vertical mullions.

Technical details

- Aluminium blade profiles are clipped into aluminium blade support clips.
- Blade pitch: 50mm.
- Blade height: 67mm.
- Visual free area : 78%.
- Available with different mullions.

Finishing

Natural anodised: 15 to 22 micron.

Other shades possible.

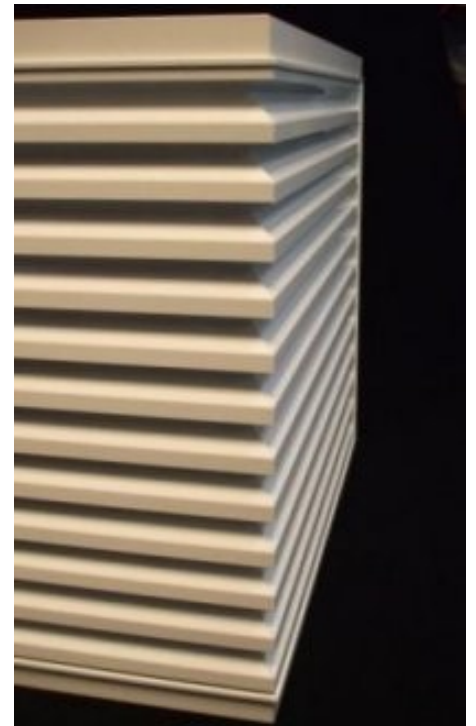
Powder coated in any RAL finish: 60 – 80 micron.

Manufacture

- Ready made or bar length
- Different types of mullions with 14,5mm, 50mm or 80mm depth.

Fixing

- Depending of the construction and project details.





Continuous Louvre System CLS-75

Type

Continuous Louvre System with a 75mm bladed louvre

The CLS-system can be fitted to an existing construction and is supported on vertical mullions.

Technical details

- Aluminium blade profiles are clipped into aluminium blade support clips.
- Blade pitch: 75mm.
- Blade height: 53.4mm.
- Depth to fit: 88mm.
- Visual free area : 77%.
- Profile thickness: Minimum 1.5mm

Finishing

Natural anodised: 15 to 22 micron.

Other shades possible.

Powder coated in any RAL finish: 60 – 80 micron.

Manufacture

- Ready made or bar length
- Different types of mullions with 14,5mm, 50mm or 80mm depth.

Fixing

- Depending of the construction and project details.

